

## **7.0 COMMUNITY UTILITIES**

---

Existing utilities operating within the community were identified. Information on service areas, capacities, current inadequacies and future needs were collected.

### **7.1 SEWER SERVICE**

Middlesex Township is currently served by municipal wastewater treatment facilities in only two locations: (1) a collection and conveyance system along and adjacent to U.S. Route 11 and (2) a collection and conveyance system along N. Middlesex Road (Figure 7-1). Both systems discharge into the Carlisle Region Water Pollution Control Facility, which is located south of the Conodoguinet Creek and west of N. Middlesex Road. This facility is owned by the Carlisle Borough Sewer Authority.

The Carlisle Regional Water Pollution Control Facility has a permitted capacity of 7.0 million gallons per day (mgd). This plant receives an approximate flow of 4.0 mgd. Treated effluent from this facility is discharged into the Conodoguinet Creek just upstream of its confluence with Spring Creek. The Carlisle Borough Sewer System Authority has discharged in conformance with their National Pollutant Discharge Elimination System (NPDES) permit.

The treatment plant's capacity allocation is as follows: Carlisle Borough - 4.33 mgd, South Middleton Township - 0.51 mgd, and Middlesex Township - 1.77 mgd. Silver Spring Township currently reserves 150,000 gallons per day (gpd) of Middlesex's allocation, with a maximum allowance of 400,000 gpd via intermunicipal agreement. The available reserve capacity for the Township's share is about 800,000 gpd.

Collection and conveyance facilities in Middlesex Township utilizing the Carlisle Regional Water Pollution Control Facility are operated and maintained by the Middlesex Township Municipal Authority. Two wastewater pumping stations are located in within the Township. Flows to the pumping stations during 1998 were within the stations' permitted capacities.

The Middlesex Township conveyance facilities tributary to the Carlisle Regional Water Pollution Control Facility are comprised of approximately 29 miles of sanitary sewer ranging from 8-inch

diameter to 42-inch diameter. There are presently 2 wastewater pumping stations located in the Township; one at Carolina Freight and one at ABF.

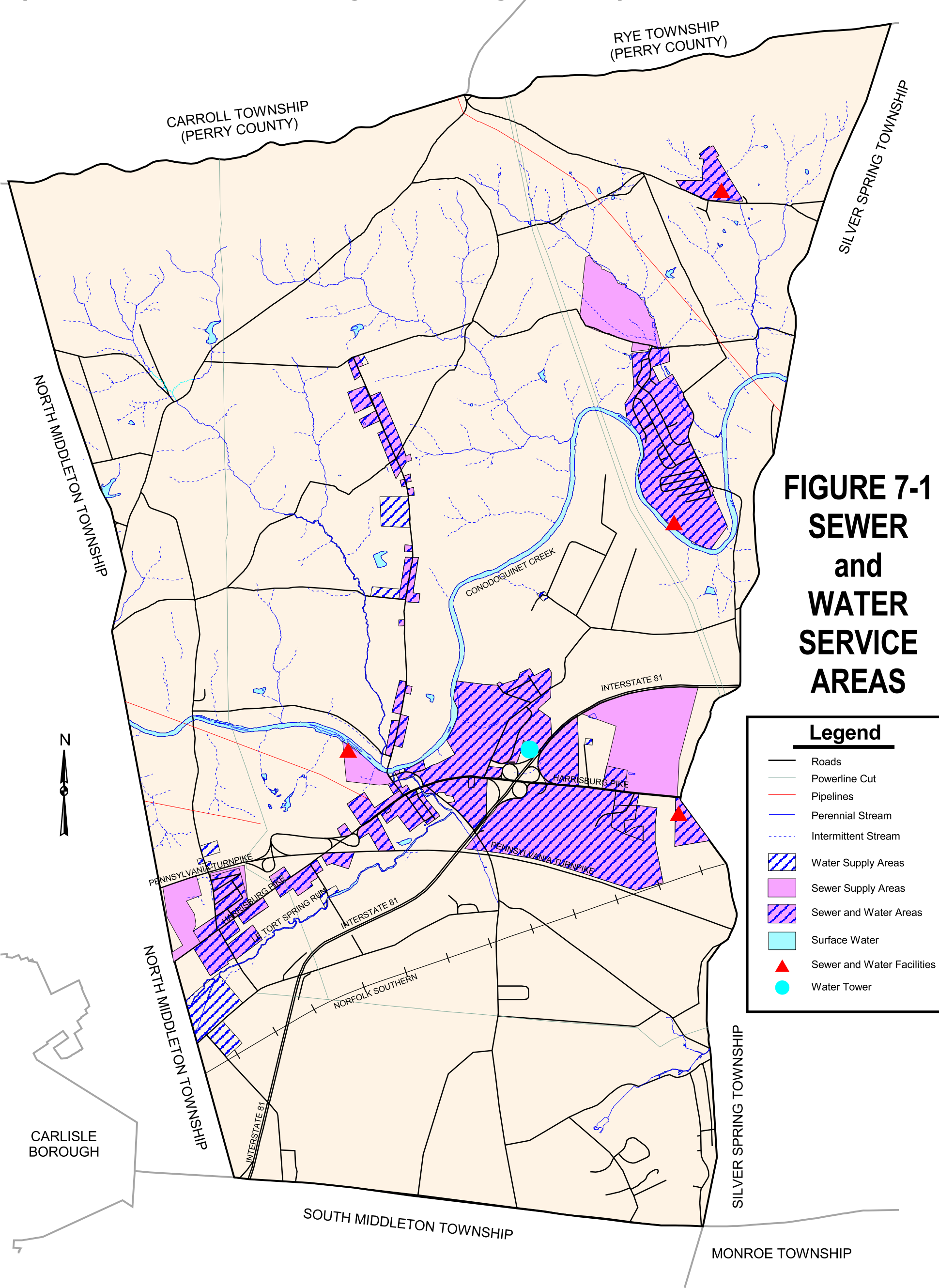
Within Middlesex Township there are 4 simplex grinder pumps for commercial establishments and 1 for a residential site. There are also two private package plants located within the Township. One package plant serves the Country Manor mobile home park and the Meadows and the Ridings residential developments. This package plant, with a capacity of 185,000 gpd, discharges to the Conodoguinet Creek near Bernheisel Bridge Road. The residents of these developments have had past problems with the sewer service, hazardous substance dumping and water quality and water quantity. The second package plant serves the Regency Woods North mobile home park. It is designed for 35,000 gpd and discharges to a tributary of the Conodoguinet Creek.

Wastewater generated outside the public sewer service areas of Middlesex Township and not treated by package plants, is treated by individual on-lot septic systems owned and maintained by the property owner. The Township employs a licensed Sewage Enforcement Officer (SEO) on staff. The SEO is responsible for reviewing soil horizon and percolation tests to determine the suitability of specific sites in the Township for on-lot sewage disposal. The SEO also reviews on-lot system planning modules, system applications and designs, performs inspections before and during construction of the on-lot system, and investigates reports of malfunctioning systems.

Several on-lot disposal problem areas have been identified by Glace Associates, the Township's sewage disposal consultant. The Ironstone Ridge, Fetrow Acres and Carlisle Springs area have experienced on-lot systems malfunctions. The Township enacted an On-Lot Management Ordinance in January of 1999. This ordinance requires that all septic or treatment tanks must be pumped out or inspected every three years, or whenever the tank is filled. The pumping and inspection of septic tanks are to be performed by a local septage pumper/hauler that has been licensed to operate in Middlesex Township. The Township was divided into four septage-pumping districts.

# MIDDLESEX TOWNSHIP

## (Cumberland County, Pennsylvania)



**FIGURE 7-1  
SEWER  
and  
WATER  
SERVICE  
AREAS**

**Legend**

- Roads
- Powerline Cut
- Pipelines
- Perennial Stream
- - - Intermittent Stream
- ▨ Water Supply Areas
- Sewer Supply Areas
- ▨ Sewer and Water Areas
- Surface Water
- ▲ Sewer and Water Facilities
- Water Tower



CARLISLE  
BOROUGH

The Township's current Act 537 Official Wastewater Facilities Plan was updated in 1993. A proposed extension to the existing sewer system was identified in this plan for the South Middlesex Road area, from the Pennsylvania Turnpike to Claremont Road. This improvement project was completed during the summer of 1999. Further extension of sewer service westward from South Middlesex to the Stoner Drive light industrial area may take place some time in the future.

**7.2 PUBLIC WATER SERVICE**

The portions of Middlesex Township that have public water service are similar to but slightly more extensive than those areas that have public sewer service. Public water is supplied from the South Middlesex Township Municipal Authority. Middlesex Township purchases 1.5 mgd of water from the South Middlesex Township Municipal Authority. A 1.5 mgd looped water storage tank was recently constructed in the northwest quadrant of the I-81/U.S. Route 15 interchange. The Township has ample reserve capacity for its water supply of approximately 1.1 mgd. No significant extensions to public water service areas are planned.

Middlesex Township is currently studying the possibility of developing and maintaining its own source of public water supply. The Township contracted with the ARM Group to perform a comprehensive groundwater availability and well siting study for the southern portion of the Township. The study concluded that there is a reliable supply of groundwater that can be developed from the carbonate aquifers of the Township. The study recommended that four potential well sites, all situated south of the Norfolk and Southern railroad tracks, should be priorities for site acquisition and development.

**7.3 ELECTRICITY**

Pennsylvania Power and Light (PP&L) is the primary provider of electricity to residents and businesses within Middlesex Township. PP&L currently maintains several substations within or immediately adjacent to Middlesex Township.

**7.4 NATURAL GAS**

UGI Corporation provides natural gas service to a number of communities in eastern Cumberland County, including Middlesex Township. Natural

gas service is available in the areas surrounding major industry and business centers, as well as to residences along portions of some arterials, and in some subdivisions. Expansion of gas service will probably occur. Those densely developed areas near existing gas lines and those in between current service areas are the most likely areas for expansion. Major industry or institutional uses currently not served may also see natural gas service expansion in the future.

**7.5 TELEPHONE**

Bell of Pennsylvania provides telephone service and maintains telephone lines within Middlesex Township. Telephone service is available throughout the Township.

**7.6 CABLE TV**

TV Cable of Carlisle provides cable TV service to a number of communities in central Cumberland County including Middlesex Township. Cable TV service is available throughout much of the Township.

**7.7 TRENDS AND ISSUES**

**Trends - Community Utilities**

**Sewer Service**

- ✓ Public wastewater collection is provided in two areas of the Township: along Route 11; and a pressure system along North Middlesex Road. Both systems are owned and operated by the Middlesex Municipal Authority. Discharge is into the Carlisle Regional Water Pollution Control Facility.
- ✓ Private systems serve the Country Manor mobile home park, the Ridings and the Meadows. A second private plant serves Regency Woods North.
- ✓ Much of the Township is served by on-lot wastewater disposal systems. The Township has adopted an on-lot management district for the management of on-lot systems.

**Water Service**

- ✓ Public water is supplied by the Middlesex Municipal Authority. Water is purchased from the South Middleton Township Municipal Authority. The Middlesex Municipal Authority is studying the possibility of developing its own source of water supply.

**Issues**

- ✓ Carefully planned expansion of sewer and water in order not to stimulate growth. Coordinated with land use recommendations.
- ✓ Acquisition of private wastewater systems.
- ✓ Aggressive implementation of on-lot wastewater management systems.
- ✓ Extend sewer along PA Route 34.
- ✓ If the Middlesex Municipal Authority pursues the development of its own water supply, protection will be needed for the selected well sites.

**7.8 COMMUNITY SURVEY RESULTS**

- The majority of respondents were satisfied to very satisfied with electric utilities (89.1%)
- The majority of respondents were satisfied with Cable TV service (53.4%)
- Of those who are not already connected to public water and sewer services, the majority would rather continue with the status quo than be connected.